

PRESS RELEASE MARCH 2014

PHILIPP MAINZER COMPLETES OFFICE BUILDING AND MASTER PLANNING FOR TAIWAN GLASS IN QINGDAO, CHINA

The headquarter in mainland China for Taiwan Glass has been completed. A 4.100 sqm office building as well as 20.000 sqm master planning is PHILIPP MAINZER's next completed project in China for Taiwan's largest glass manufacturer.



A progressive and thoroughly planned corporate architecture has been realised for the building design for office and apartment building, smaller buildings such as gate house, canteen and pagoda as well as the complete landscaping of the area.

With a particular focus on the convenience of the work space and surroundings, PHILIPP MAINZER OFFICE FOR ARCHITECTURE AND DESIGN developed an overall masterplan for Taiwan Glass' main branch in mainland China. Considering all local requirements and standards, the concept sets special focus on the company's product glass, the principal inclusion of daylight into the architecture and the consistent use of authentic, yet simple materials with Feng Shui principles in mind. The architecture results in a very amenable working environment for all employees without neglecting energy-saving technologies.

The main three-storey building houses offices, restaurant as well as apartments for the company's managers. The general floor plan separates the structure into two buildings, office and apartment building, connected by an elegant bridge on the third floor. Consistent with the first building for Taiwan Glass in Fujian, China – also by PHILIPP MAINZER – this building features glass as a central element. Creating a distinct presentation of the company's main product, float glass, a reinforced concrete structure with random segmentation and large glass curtain walls create an exciting, yet harmonious appearance for the façade and building, whilst ensuring transparency and maximum use of daylight.

Also in the interior, specially designed large glass windows dominate the space, disappearing behind the suspended ceilings. Thus, interior and exterior are blending into each other, evoking openness and generosity. The window glass is a low-energy glass possessing good sun and temperature protection properties at high light transmission. Simple and refined materials such as wood, stone, glass and metal dominate the interior design. A gentle furnishing concept, an open space structure as well as fascinating visual perspectives from one room to another, into planted courtyards and the surrounding landscape accentuate the new built.

In cooperation with a Feng Shui master, PHILIPP MAINZER planned a generous pond and plantation for a balanced landscaping, giving the employees abundant room to rest und recover.

Ends. /

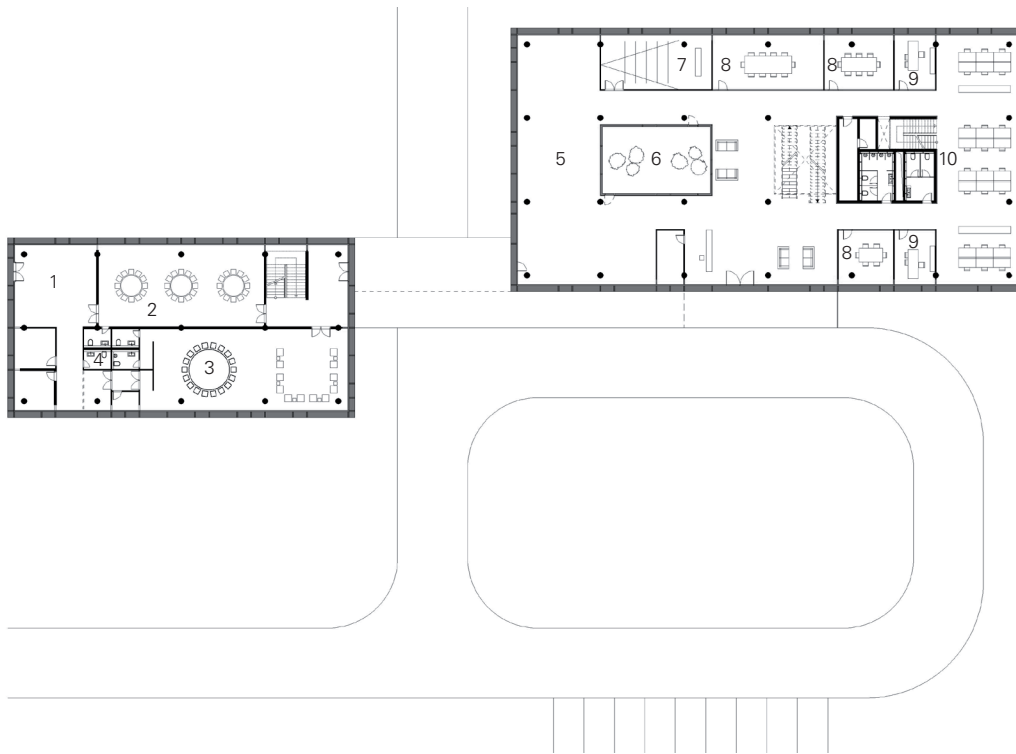
NOTES TO EDITORS

FACTS

Client:	Taiwan Glass
Location:	Qingdao, China
Status:	Completed
Programme master planning:	4.100 sqm office building, 20.000 qm Masterplan

CREDITS

Architecture and Interior Design:	PHILIPP MAINZER OFFICE FOR ARCHITECTURE AND DESIGN, planning phases 1-3, 5, 8
Team:	Johanna Egenolf, Sandra Stachelroth, Anke Wollbrink, Miriam Tocino, Tudor Maldarescu, Julia Kluger
Local architects:	WZWX Architecture Group (Stephen Wang, Richard Wang), planning phases 4, 6, 7, 9
Statics, facade:	Zhejiang Urban Construction Group
Technical development:	Shanghai Qingya Mechanical & Electrical Engineering Co., Ltd
Building element calculation:	Guangdong Yuejian Design and Research Institute (Huaian Branch)
Photography:	Ingmar Kurth



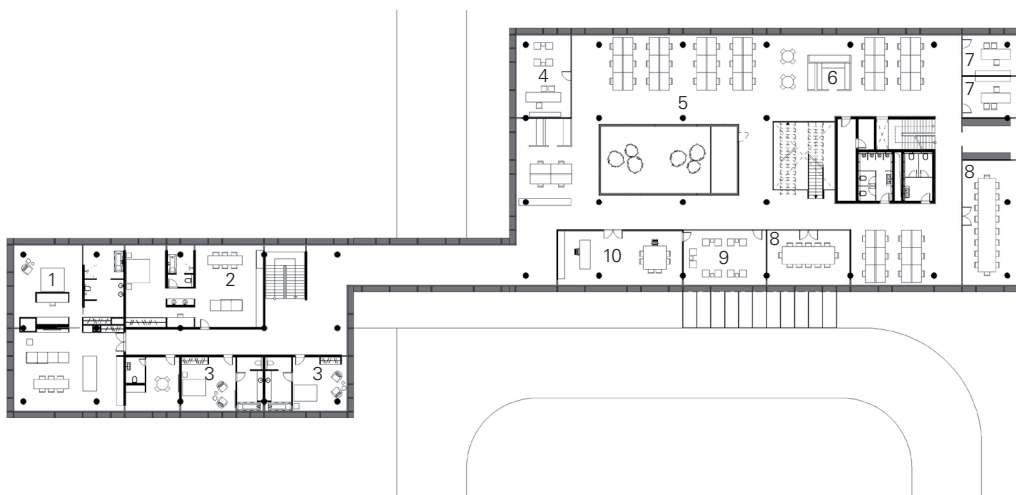
Floor plan Ground Floor

- 1 Kitchen
- 2 Restaurant
- 3 VIP Restaurant
- 4 Toilets
- 5 Exhibition area
- 6 Atrium
- 7 Auditorium
- 8 Meeting room
- 9 Manager's office
- 10 Open plan office



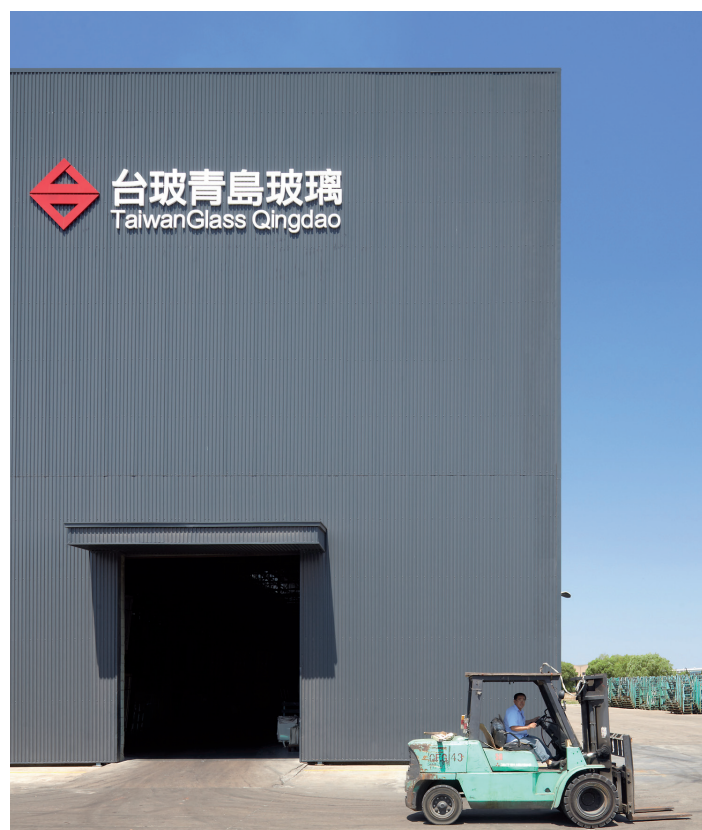
Floor Plan First Floor

- 1 VIP apartment
- 2 Standard apartment
- 3 Manager's office
- 4 Meeting room
- 5 Open plan office
- 6 Tea kitchen
- 7 Office Vice President



Floor Plan Second Floor

- 1 VIP apartment
- 2 VIP apartment
- 3 Standard apartment
- 4 Office Vice President
- 5 Open plan office
- 6 Tea kitchen
- 7 Manager's office
- 8 Meeting room
- 9 Lounge
- 10 Office VIP



Facade



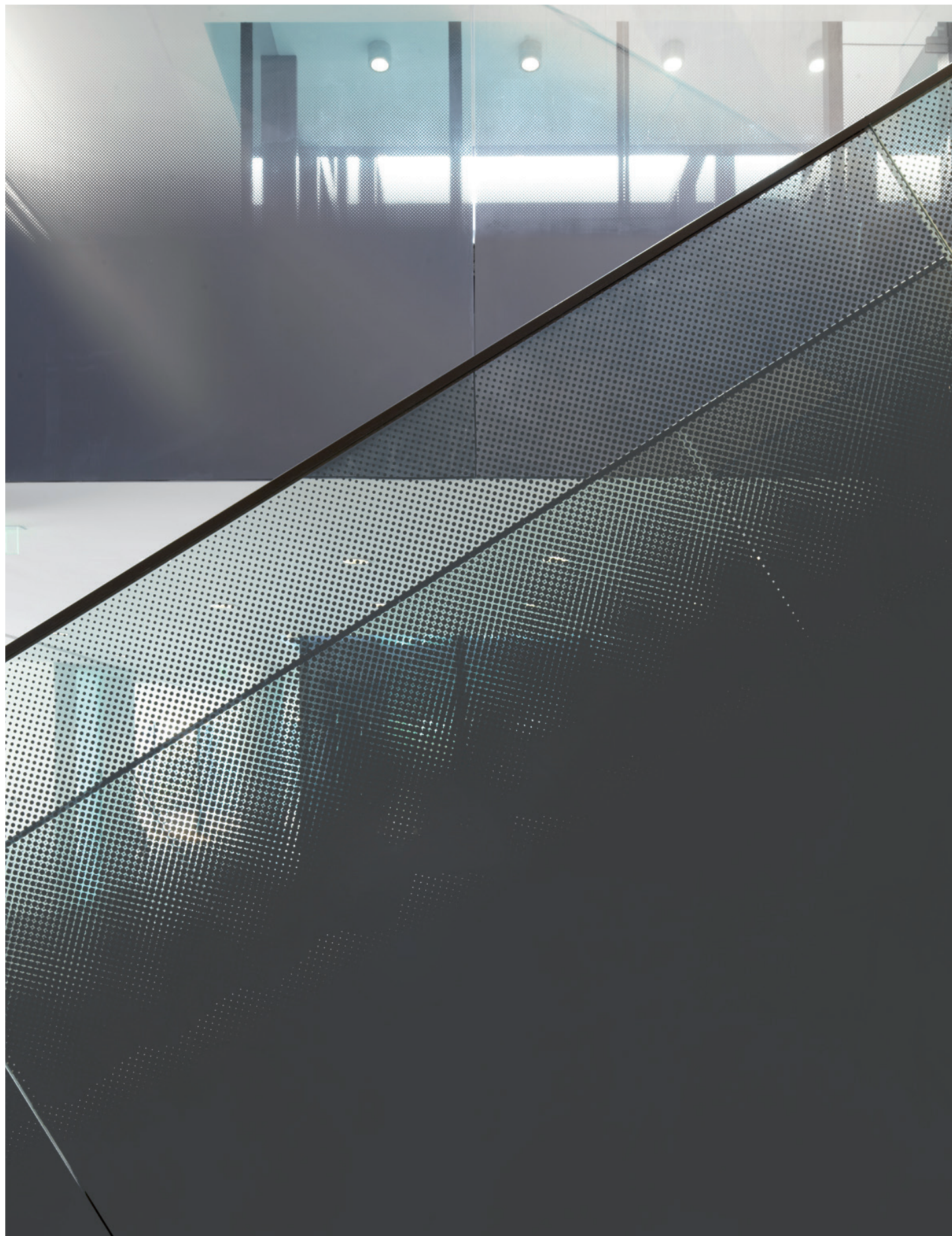
Office Building



Office and apartment building



Apartment building



Screen printed balustrade made of glass



Bridge



Atrium office building



Courtyard office building



VIP Restaurant



Open plan office



Tea kitchen



Outdoor facilities



Facade at night

PHILIPP MAINZER
OFFICE FOR ARCHITECTURE AND DESIGN
WWW.PHILIPPMAINZER.COM

PHILIPP MAINZER
OFFICE FOR ARCHITECTURE AND DESIGN

PHILIPP MAINZER OFFICE FOR ARCHITECTURE AND DESIGN works internationally on commercial, residential and cultural projects providing full architectural, interior and exhibition design as well as furniture design services for both the public and private sector. Committed to a consistent and progressive conceptual approach, the work is inspired by the dynamic interaction of diverse cultures and disciplines. With a focus on a high level of quality and authenticity, the diverse team of architects and designers develops original concepts with refined aesthetics and the required functionality. The partnership with modern furniture brand e15 effects synergies, extending the boundaries of traditional architecture.

PRESS CONTACT

For further information or images please contact the in-house PR team:

Sophie Emmerich, T +49 (0)69 945 4918 31, se@philippmainzer.com
Alessa Schulz, T +49 (0)69 945 4918 32, als@philippmainzer.com

PHILIPP MAINZER
OFFICE FOR ARCHITECTURE AND DESIGN
Gwinnerstraße 40-46, Building 416
60388 Frankfurt am Main, Germany
T +49 (0)69 9454 918 80
office@philippmainzer.com
www.philippmainzer.com